

MH114-3T



VIBRATION ANALYSIS HARDWARE

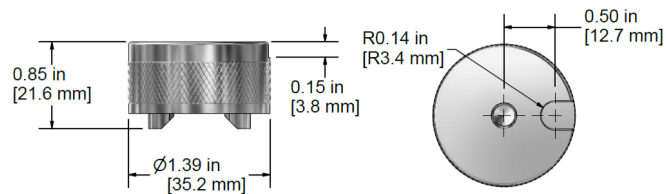
Multipurpose 2 Rail Magnet Mounting Base with 1/4-28 Tapped Hole and Triaxial Alignment Notch, 50 lbs. Pull Strength, 1.39" (35.31 mm) OD, 0.85" (21.59 mm) Height



Product Features

Triaxial alignment notch locates CTC triaxial accelerometers consistently

- ▶ Durable 303 Stainless Steel case and mounting hole
- ▶ High strength Neodymium Iron Boron magnet optimizes pull strength and performance
- ▶ 2 rail mounting system allows measurements on flat and curved surfaces



Specifications

Max Temperature	266°F (130°C)
Case Material	303 Stainless Steel
Magnet Material	Neodymium Iron Boron
Dimensions	1.39" (35.2 mm) OD, .85" (21.6 mm) Height
Pull Strength	50 lbs. (23 kg)
Sensor Mounting	1/4-28 Mounting Hole

Chemical Compatibilities for Reference

- ▶ Gasoline - A
- ▶ Methanol - A
- ▶ Lubricants - A

Compatibility

- ▶ Compatible with all sensors with 1/4"-28 mounting stud or bolt
- ▶ Conversion mounting studs sold separately

Stock Product

Backed by our Unconditional Lifetime Warranty

www.ctconline.com | sales@ctconline.com | 585-924-5900