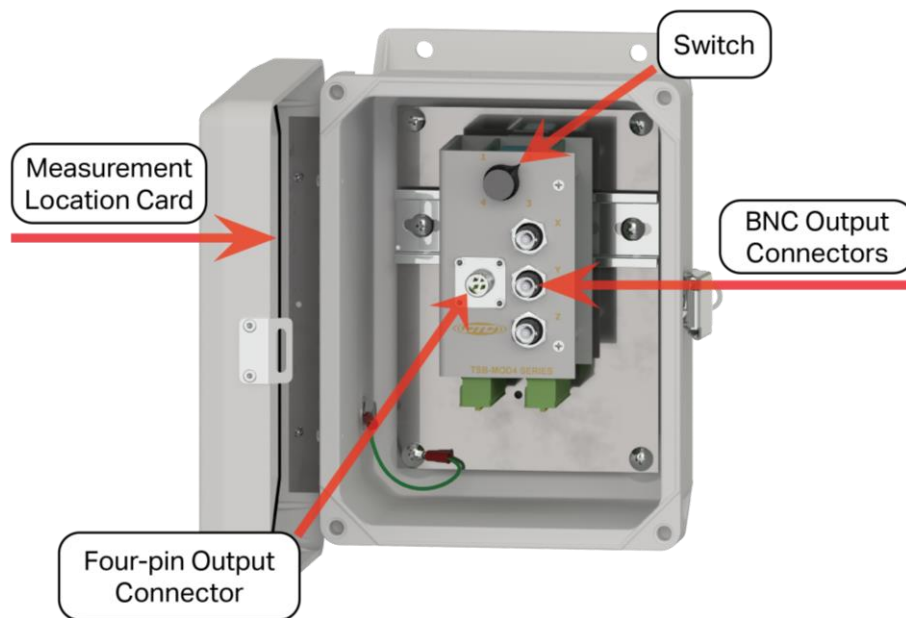


TSB1000 Fiberglass Modular Switch Box

The TSB1000 fiberglass modular switch box is used to convert the four-conductor input wiring of up to four remotely installed triaxial accelerometers or piezo velocity sensors (for a total of 12 measurement channels) to two switched BNC and a switched four-pin MIL spec connector for data collection. Input wiring from each sensor is connected to the outputs via spring cage or screw terminal blocks. Each terminal block includes inputs for X, Y, Z, Common, and Ground. The shield drain wire is earth grounded via a ground stud that is mounted to the side of the fiberglass enclosure. Additionally, the TSB1000 Series series can be equipped with online expansion terminal strips, which can be selected upon ordering. While the channel count of standard SB or JB switch boxes cannot be modified after purchase, TSB1000 boxes offer the flexibility to add channels at a later date (if less than four inputs are required for initial installation). Simply purchase additional terminal blocks and plug them into the bottom of the module to add channels. The TSB1000 series may also be equipped with online expansion terminal strips, which can be selected upon ordering.



Rated for NEMA 4X (IP66), the TSB1000 Series can withstand harsh environments including temperatures ranging from -58 to 180 °F (-50 to 82 °C). The box is also resistant to hose-directed fluid and corrosion. A snap latch is installed on the door allowing the box to be sealed from the elements when not in use.